

CURRENTS

SUMMER 2008 NEWSLETTER

Published quarterly by Wabash & Erie Canal Inc. for its members and friends

Two Big Events Coming to Delphi

Transportation Festival in Delphi June 14-15

All modes of transportation will be on display or available for your enjoyment when Delphi celebrates its transportation history with two days of fun, food and entertainment.

Park your car once and take the trolley to venues around the downtown area and Canal Park on Saturday and at the Delphi Airport and Carrollton Bridge on Sunday.

Saturday events downtown will feature antique autos, school buses and grain wagons, train exhibit, a bicycle rodeo, live entertainment and concession booths and craft. Take a tour of the historic Assian Ruffing Opera House and the Carroll County Museum.

At Canal Park Saturday the new "Playboat" will be dedicated at 1:30 p.m., complete with the first performance of the "Life on the Canal" skit. Enjoy the Wheelmen antique bicycles, canal boat rides, pony cart rides and bicycle rentals. Wildcat Canoes and Kayaks will be on hand. Snack Shack and Case House will be open.

Sunday events will move to Delphi Airport with a balloon launch at dawn, breakfast from 7 to 10 a.m., followed by aircraft, glider and balloon tether rides. Black Creek Crossing Band will play from 1 to 3 p.m.

The award-winning restoration of the Carrollton Bridge 5 miles north of town and the Wabash Water Trail will be dedicated beginning at 2 p.m., followed by dedication of Grantham's Landing and Mary K's Lookout at the north end of the bridge, site of former canal structures.

Traditional Canal Days Weekend July 5 and 6

Come join the fun as we celebrate the 1800s when Delphi was an important port along the Wabash & Erie Canal.

The weekend will be packed with activities for all ages. Bring the whole family because both children and adults will enjoy exploring the newly installed full-sized "Playground Boat" at Canal Park. There will be children's games as well throughout each day.

Saturday's events will start with the Delphi Lions Club's Independence Day Parade at 10 a.m., through downtown and ending at Canal Park, where Canal Days activities will take place. All Canal Park buildings will be open 10 to 5 on Saturday and 12 to 5 on Sunday.

Many pioneer crafts will be demonstrated and some crafters will have items for sale. Hand-made items can be purchased at the Bowen log cabin gift shop as well.

For a special treat, come to the Reed Case House Saturday afternoon to see a craftsman demonstrate how to apply rope to an antique rope bed. This historic 1844 house, the log school house and the Canal Interpretive Museum will be open for tours both days.

Take a boat ride on the canal or ride the pony cart or horse-drawn carriage. Have lunch or a snack at one of the food booths and save room for ice cream and homemade pie! Sunday listen to the "Life on the Canal" skit at 2 p.m.

Schedule of Events for Canal Days July 5 and 6

Saturday Only (Park open 10-5)

Rotary Breakfast 6-10 a.m., Honan Hall
Patriotic Parade 10 a.m., downtown streets
Parade Awards 12 noon, Canal Center
Rope Bed demonstration 1-5 p.m., Case House
Broom making demonstrations 10 a.m.—5 p.m.
Boat rides 11 a.m., 2 and 4 p.m.
Narrated towpath walk 3 p.m.

Sunday Only (Park open 12-5)

“Life on the Canal” skit 2 p.m.
on Playground Boat
Carriage rides 1 to 4 p.m.
Boat rides 1 to 4 p.m.
Narrated towpath walk 3 p.m.
Hand-made pie safe drawing 4 p.m.

All Day Both Days 10 to 5 Saturday, 12 to 5 Sunday

Playground boat open ~ Children’s games ~ Canal Interpretive Museum open ~ Case House Tours ~ School House open for tours ~ Cabin Crafts Gift Shop for quality hand-made gifts ~ Snack Shack for lunch, homemade pies, ice cream ~ Food vendors ~ Indian artifacts ~ Blacksmithing ~ Bird-house building at Jim’s Carpenter Shop ~ Pony cart rides ~ Towpath Trails each direction from the park for walking or biking.

Many pioneer craftsmen and artisans demonstrating and offering wooden toys, woodworking, potpourri and gourds, china painting, book binding, crocheting, tatting, fiber art, bowl carving and much more.

Directions: Canal Park is located on Washington Street in Delphi, Indiana. At the traffic light at the courthouse go north 11 blocks on Washington Street. Cross canal on stone bridge. Entrance 200 feet on the left. Ample parking available. No admission charge; donations welcomed.

Duke Energy Sponsors Major Exhibit

The first major gift to the Canal Association’s TOTAL CANAL EXPERIENCE fund-raising campaign came at the association’s Annual Meeting April 15 when Pat More, Duke Energy business relations manager, presented a check for \$30,000.

This generous gift from Duke Energy’s Midwest foundation will sponsor the Mule Barn, a replica of the 1800s relay stations that were placed along the canal to house the animals that pulled the canal boats. It was necessary to exchange tired horses or mules for fresh ones at regular intervals. At the Mule Barn at Canal Park, in addition to the work animals, visitors will see displays in an adjoining “tack room” and a video on how to harness a mule.

Like the rest of the exhibits planned for installation up and down the length of Delphi’s canal, this exhibit will provide a learning experience for all ages.



Mule Relay Station

On May 30, a group of 30 Duke Energy volunteers came to Canal Park ready to work. They worked on the Mule Barn itself, cut trees at the site of the future canal boat warehouse, painted the “Playground Boat” and helped with cleaning and maintenance of the park grounds.



Our gratitude to Duke Energy, not only for its financial generosity but for the helping hands and positive spirit it brought to assist at Canal Park and the park annex.

Board Members Elected at Annual Meeting

Carroll County Wabash & Erie Canal, Inc. members and guests gathered at the Canal Center April 15 for the association’s Annual Meeting and to hear guest speaker Shirley Willard, Fulton County Historian, speak about the “Trail of Death” signage being undertaken by the Pottawatomie Trail of Death Association.

The Canal Association’s fund-raising campaign,

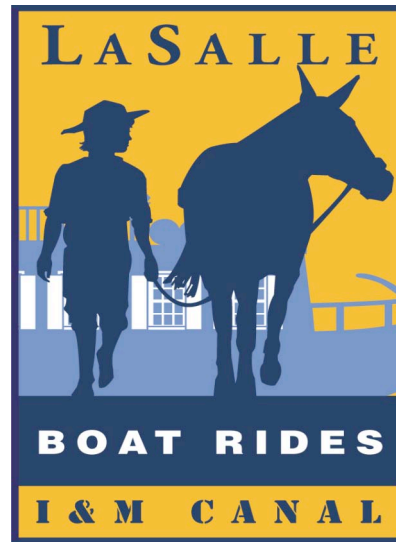
THE TOTAL CANAL EXPERIENCE

was introduced with the help of Sue Ann Cornell and Dick Bradshaw.

During the business meeting, the following were re-elected to new three-year terms: Mark Smith, Judy Stirm and Gordon Stevens. Al Auffart was elected as a new board member for three years, replacing retiring Paul Brandenburg.

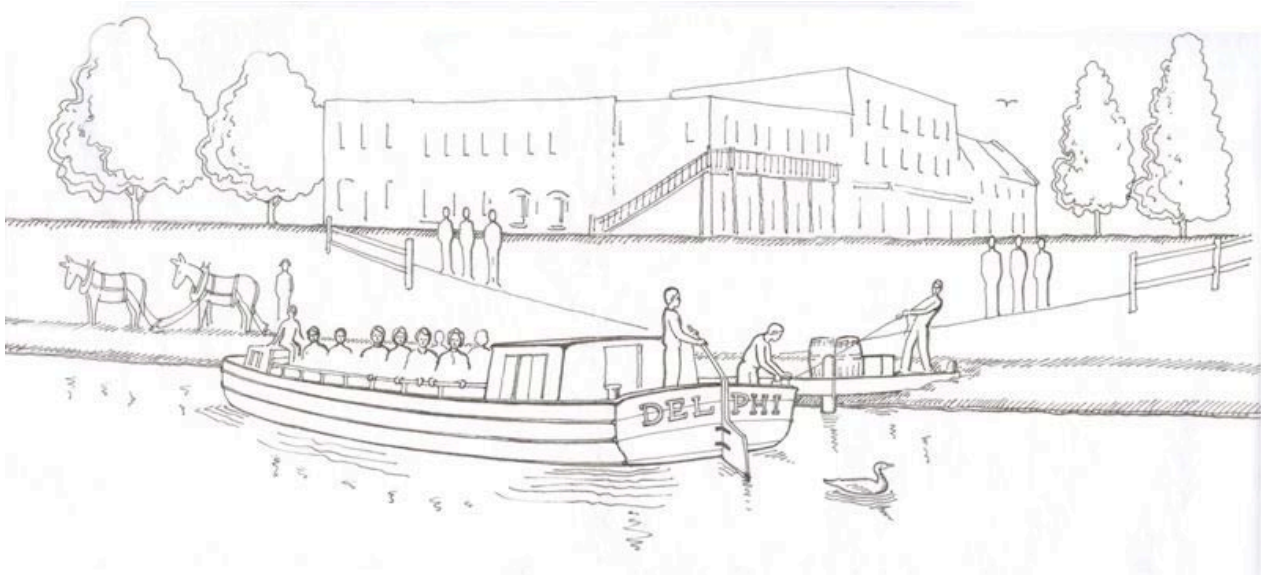
At the May board meeting, the following officers were elected: Dan McCain, president; Al Auffart, vice president; Frances French, secretary, and Ed Gruber, Treasurer. The board appointed the following new directors to one-year terms: Steve Gray, David Kelly, Steve Busch, and Paul Brandenburg. The board also expressed its thanks to Bill Draper for his years of service as vice president of the association. He continues as a member of the board.

Trip to Illinois for Boat Ride Planned July 9



Wabash & Erie Canal Association has chartered a bus to take our volunteers and guests on an all-day trip to LaSalle, Illinois, where they will experience a ride on a full-sized horse-pulled canal boat. The 76-foot boat is a replica of an 1848 boat and has a capacity of 75 passengers. Tour guides dressed as canal era crew and passengers will tell stories of the Illinois & Michigan canal's early days.

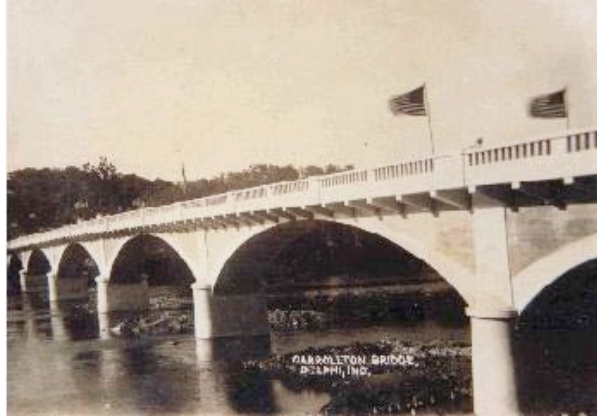
The LaSalle boat was launched just this spring. It will give our tour group a taste of what it will be like when our own boat is launched in the early summer of 2009.



Bus space is limited so if you would like to join the tour please call soon at 765-564-2870. The Canal Association is providing transportation. Your lunch, boat ride ticket and any incidentals will be at your expense.

Carrollton Bridge Dedication Involves Canal Sites

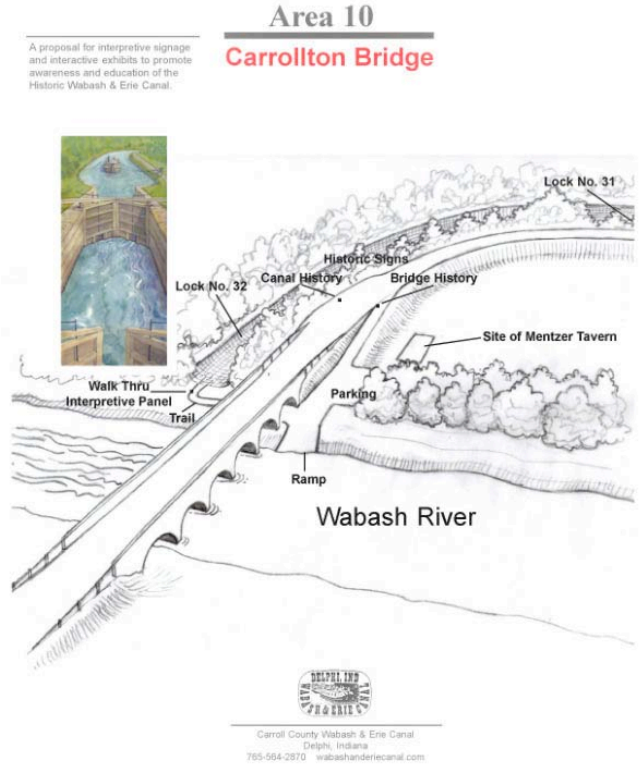
The two-day Delphi Heritage Transportation Festival will move to the Carrollton Bridge five miles north of Delphi as the community celebrates the mighty Wabash River – a major player in transportation during the development of Indiana and the Midwest.



Carrollton Bridge in the 1930s



Carrollton Bridge as it looks today



A birdseye view of the interpretive sites at the north end. Mary K's Overlook (Lock site) on the left and Grantham's Landing (Mentzer Tavern) on the right.

The Wabash & Erie Canal was a part of that role as well, and the Carrollton site is a good example. Here the canal boats actually entered the Wabash slackwater, pulled by horses crossing on a bridge, to re-join the canal that continued on down the other side.

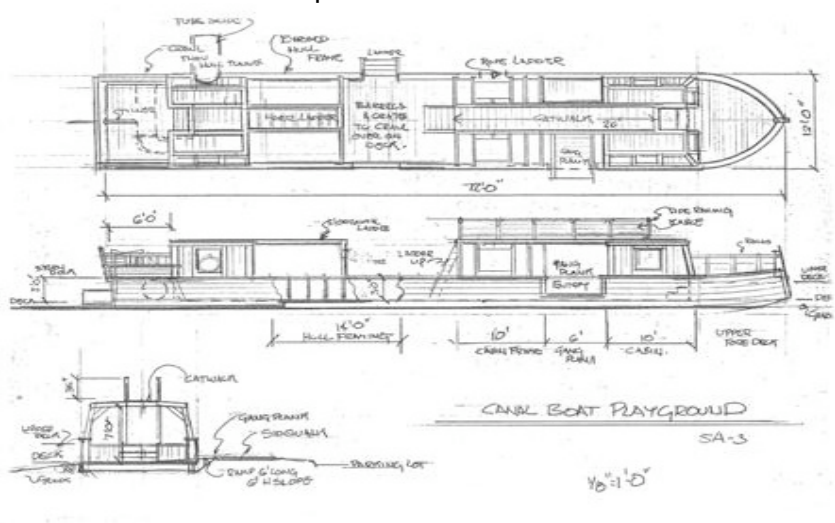
The public is invited to the program that will begin at 2 p.m. to re-dedicate the renovated Carrollton Bridge, followed by dedication of the Wabash River Water Trail. The event will move across the bridge to the site of two historically significant canal areas. Grantham's Landing celebrates the Mentzer Tavern which was located near the bridge and attracted canal travelers. Mary K's Lookout is the location of canal Lock #32. Interpretive signs at these locations will inform visitors of their importance.

Thanks to Canal Society of Indiana for a generous donation for the interpretive signage, and to a crew of Earth Day workers who cleaned the area and helped place the signs. Terry Lacy is creating the drawings for the signs and Tom Castaldi is developing the historical background for these two very important sites on the Wabash. Thanks go especially to the Grantham and Johnsen families for donation of land for this important canal interpretive area.

Progress Noted on Many Canal Projects

The spring season has been one of the most productive in recent memory.

- Two buildings recently moved to Canal Park did not have proper foundations but workers were at a loss as to how to proceed. Enter Rich Markins, a retired mason from Valparaiso who appeared out of the blue a few years ago and built the lime kiln exhibit in the Interpretive Center. He appeared again at just the right moment to direct our volunteers on how to place foundation stones under the old railroad baggage building along the trail and the school house in Canal Park. Stone was donated by Delphi Limestone Company and mortar sand was a gift of Segal's Gravel.
- The crew moved next to the old stone arch bridge on Bicycle Bridge Road, near the "Blue Bridge." The 1905 stone bridge was missing the cap and badly needed pointing of the eroded mortar.
- On Earth Day workday, even with rain sputtering, volunteers worked at three sites. They planted hundreds of trees at the wetland restoration area near the Blue Bridge and lower trails, removed trash and cleaned up trails.



- Over the past month the Monday-Wednesday-Friday construction crew moved pre-constructed pieces of the playground boat to Canal Park and assembled it, preparing it for its dedication on Saturday, June 14.
- May 17th was flower planting day at Canal Park. Special thanks to Chris Neumann and Pat Draper for keeping everything beautiful!

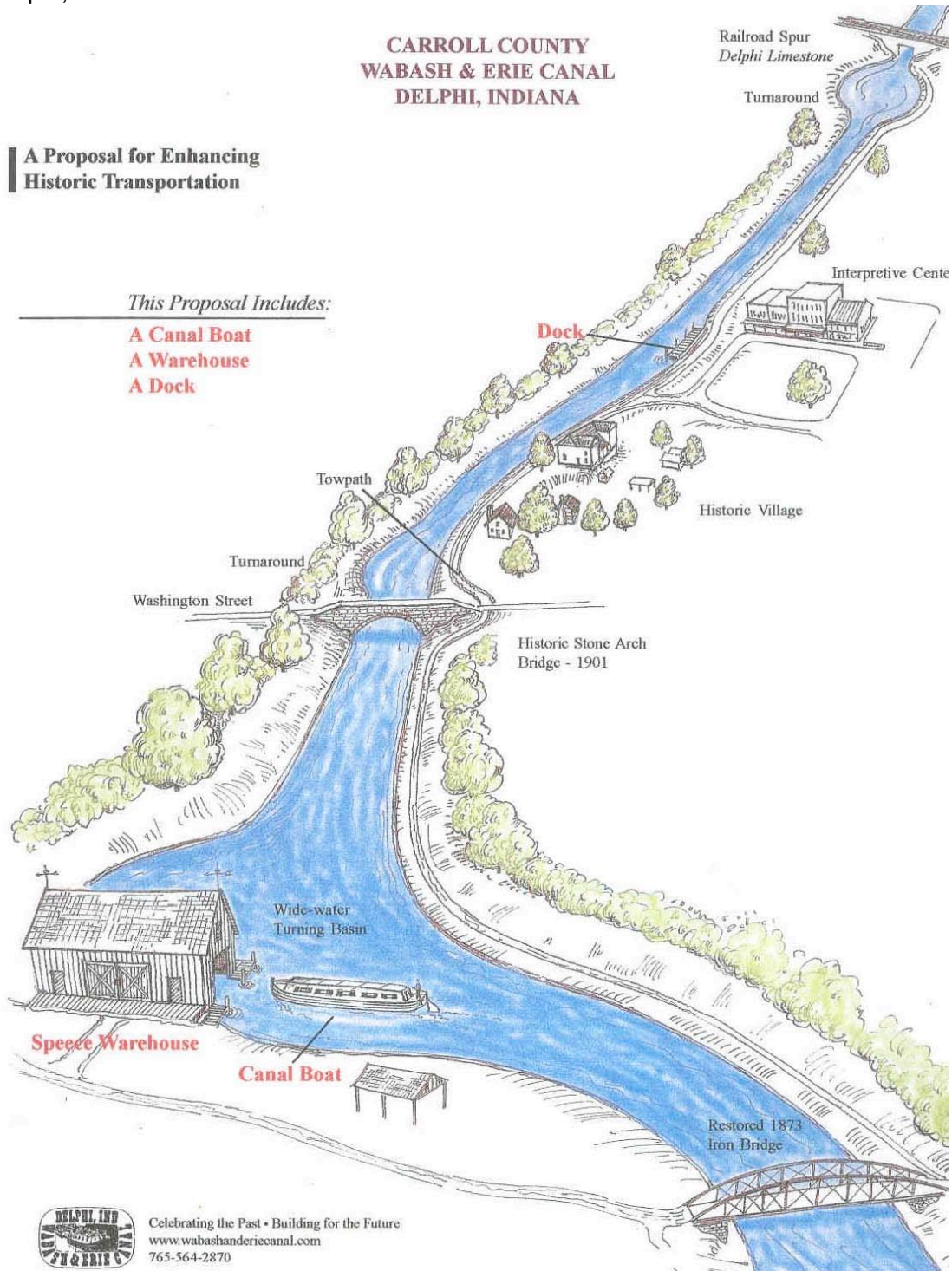
Several Benches Added to Trails by Sponsors

Trail benches add to the enjoyment of the trails and Canal Park, and often serve as meaningful memorials as well. They are available for a donation of \$150 each.



Harry Adair, of Colorado, gave a bench recently in memory of his wife Sara Johnson Adair, a 1958 Delphi High School graduate. Alice Buckley, of West Lafayette, honored the memory of Dennis Kochert with a bench. Another has been placed by June Shannon, of Lafayette, in memory of her husband Bill. Delphi High School class of 1962 also sponsored a bench for the trails.

To help celebrate the marriage of Canal Association Treasurer Ed Gruber and Melverine Hufty in April, members of the Canal Association board and friends donated a bench.



The Canal "DREAM" is coming true – watch for major accomplishments in 2009